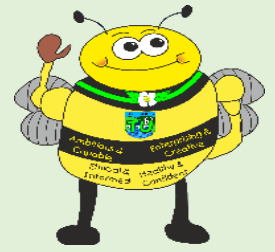


Tre Uchaf Times



Belong- Believe- Be the best you can be!

Theme next week: *Sharing*

Welsh phrase of the fortnight: Sut wyt ti? How are you?

Attendance: 93.2%

Best attending class- Buttercups with 100%

Ardderchog pawb!

Cardiff University

We have been selected to take part in a Welsh Research project which is looking at how English medium schools are teaching Welsh and how the children are learning Welsh. This is a perfect time due to our recent recommendation from Estyn which is to develop the children's Welsh oracy. If you don't want your child to take part, please let us know by 17th September.

Flu Vaccine

Thank you to the parents who have already completed the form to consent or not consent to the nasal flu. If you haven't completed it yet, please do so today.

<https://forms.office.com/e/zV0bjq9QNm>

Any further information will be available from the school nurse by email
SBU.schoolnursing@wales.nhs.uk or telephone 01639 862801

Please can you complete the form before 4.30pm TODAY.

School council elections



Our annual elections will be taking place on Wednesday afternoon. If your child wants to make a difference in how we organise and run the school, this would be an ideal opportunity for them.

We have 4 pupil voice groups.

These are: Bee Citizens, Criw Iaith, Healthy Bees and the Creative Bees. The chair and vice chair of these groups make up our school council. The school council help Mrs Davies and the Chair of

Governors to make decisions about the school such as, Starbees community café, pencil cases, Gymnastics interest group, netball posts on the junior yard, new playground equipment and better PE lessons. All these ideas help to make a difference.

Please help them to write a short speech to be delivered to their class to persuade their peers to vote for them in the elections. Results will be counted and shared with the children on Friday afternoon.

Consent forms and data collection

Each child went home with a data collection sheet sometime this week. Please check the information is correct, amend the changes if needed and return it to school next week **only** if there are changes.

The information we hold for you needs to be accurate especially if there is an emergency in school and we need to contact you quickly.

After school clubs

Monday	Community Welsh Parents/carers and children	Mr Smith
Monday	Zumba- Years 3-6	Mrs Horne
Tuesday	Story Keepers Year 3 &4	Miss Miller
Tuesday	Bronze Ambassadors- fitness Cancelled this week due to staff training	Mrs Lodwig and Mrs Hall
Thursday	Staff Zumba	Mrs Horne



Family learning

Family learning is on Wednesday morning between 9.15 and 11am in the meeting room with Elaine. This is a lovely opportunity to mingle with other like-minded parents of children in Reception and Year 1, make a game or prepare an activity and spend one on one time with your child in school.

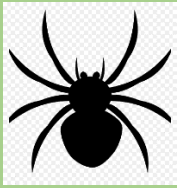
You don't need to attend every week but the families who have come along have really enjoyed it! Elaine is lovely and will give you a fabulous welcome. Tea and coffee is free!

School Uniform and wearing a coat in the rain!

The rain has been torrential this week and the children have been playing outside when we've had a downpour, so it's really important they wear or bring a coat to school. Please ensure they have their name on it because there are similar styles and we don't want them to get muddled up!



Please label **all** school uniform particularly jumpers, cardigans, coats and lunch bags. These items tend to be misplaced more than others and for us to return them to their rightful owner, it's much easier if they have a name on them.



Spiders

It is spider season and we are noticing some spiders are coming into school from the outdoors. We have told the children not to pick them up in case they are a breed which may bite. If they alert one of the teachers they will arrange for safe removal! Please can you remind them of this at home. Many thanks



Reminder of playground rules decided by the children.

- No climbing up the slide in case someone comes down too quickly
- **DON'T** use the playground equipment before school
- Wait your turn and no pushing on the steps
- No pushing anyone when using the bridge
- If people push and shove they should have 1 warning and if they don't improve their behaviour they aren't allowed to use it for the rest of the playtime
- No jumping off from the top
- Climb where it's safe to do so
- No little stones to be moved from the wigwam area to the slide
- Adults should be watching to help little children to be safe (Supervised at all times)
- Always be careful when using it to avoid people hurting themselves

Pencil cases

Thank you for supporting the school council and supplying a pencil case for your child. It's much appreciated! This is a list of things that might be useful.

Things that could be included:

- Black writing pens (**Not** gel pens or wet and inky pens like a fountain pen - more like a biro)
- Pencil
- Rubber
- Sharpener
- Coloured pencils or coloured felt pens (Not Gel Pens)
- Glue stick
- Coloured highlighter in green, orange or blue (Not yellow)
- Small ruler that fits inside the pencil case



Please avoid very large pencil cases because there is only so much room on their desks!

Class Dojo

This is a great method of communication and a great way to send a quick message to the class teacher. However, when teachers are teaching during lesson time they won't be able to respond to you. Therefore, if



somebody different is collecting your child you must contact the school office as the dojo message might not be read until after 3pm.

Teachers will respond to messages between 8am and 5pm on their working days. Thank you for your understanding.

Safeguarding and Child Protection

The child protection and designated safeguarding officer for our school is **Mrs Louise Davies**, the Head teacher. In her absence the deputy safeguarding lead is **Mrs Stephanie Edwards**. The Governor with responsibility for child protection and safeguarding is **Mrs Rachel Rees**, the Chair of Governors.



<u>Dates</u>	
15 th September	Influenza programme for children in reception- Year 6. Please complete the consent form by Monday. https://forms.office.com/e/zV0bjq9QNm
18 th September at 1.30pm	Film in a fortnight sharing event Pupils only (Parents/carers later on in the term)
16 th September	Monster phonics training for staff
17 th September	School council elections
22 nd September- Harvest week	
24 th September	Daffodils to Kidwelly Castle
25 th September	Hyacinth to Copper Jack
26 th September	Harvest Assembly
2 nd October	Tulips to South Wales Mining Museum
15 th October	Shw mae day!

20th October

Year 6 to watch the Penyrheol Matinee performance of the annual show